

Identifying Huanglongbing (HLB) and the Asian Citrus Psyllid

J. Oliver, E. Ali, S. Taylor, & T. Stackhouse

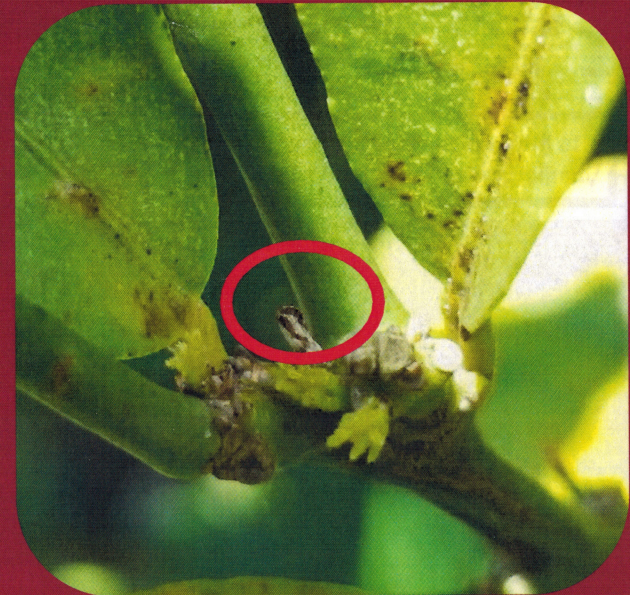
Leaf Symptoms:

Blotchy Mottle or Asymmetrical Chlorosis



Vector:

Asian Citrus Psyllid



For more information, contact Dr. Jonathan Oliver [jonathanoliver@uga.edu, (229) 386-3036]

or your local University of Georgia Cooperative Extension agent: https://extension.uga.edu/county_offices.html